

- Handlebar Extension Kits are an optional accessory that can be added to existing lifters (with extra hose) or new lifters upon ordering.
- Handlebar Extension Kits are used for wide loads where the operator must stand further away.
- The Kit allows the handle to move a range of 90 degrees (45 degrees up and down) and can be friction locked in position by tightening a hand knob.
- If load specifications change, handles can be completely removed if proven unnecessary, as they are an optional accessory.

NOTES:

1. All kits listed require using existing front handlebar with handlebar mounting brackets and hardware unless otherwise specified.

2. For lifters with VPFL4's, VPF-57's, ATL's, AT's, ETL's & ET's type generator, hose and required fittings needs to be ordered to accommodate all kits for attach/release control valve with safety lockouts. Contact ANVER for information and application requirements.

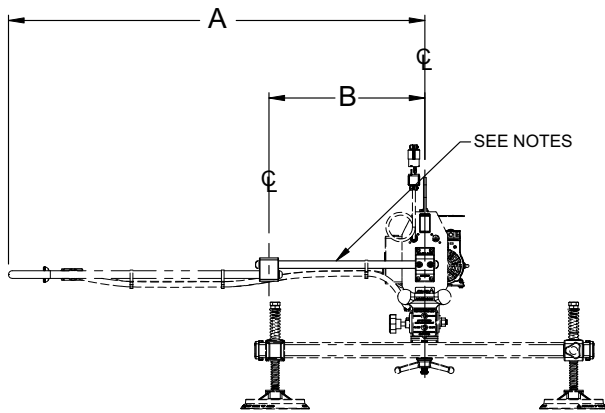
3. Depending on the lifter application using VPFL4's, VPF-57's, VPE1's & BAE1's generator, bolt-on counterweight P/N: HBXK-CW may need to be ordered. Maximum handlebar extension adjustment will be reduced. Contact ANVER for information and application requirements.

4. For ATL's, AT's, ETL's & ET's type generators [for tilters], handlebar extension kit adjustment dimensions do not apply. Contact ANVER for information and application requirements.

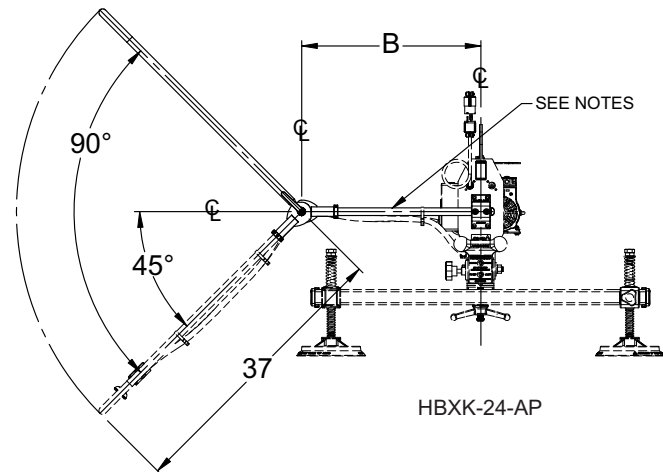
5. For 1" diameter handlebars only. Not compatible with M250M or VPE3-Series generators that use thicker handlebars.



Shown with HBXK-24-AP



HBXK-24A & HBXK-36-A



HBXK-24-AP

Model Number	HBXK-24-A	HBXK-36-A	HBXK-24-AP
A Extended Length Maximum [in (mm)]	54 (1372)	66 (1676)	60 (1524)
A Extended Length Minimum [in (mm)]	36 (914)	48 (1219)	43 (1092)
B Extension Kit Length Maximum [in (mm)]	20 (508)	32 (813)	23 (584)
B Extension Kit Length Minimum [in (mm)]	6 (152)	6 (152)	6 (152)
Fixed or Pivoting Style	Fixed	Fixed	Pivoting