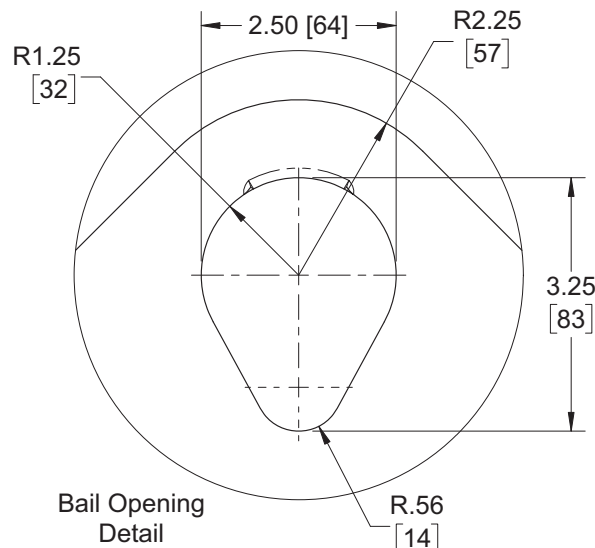


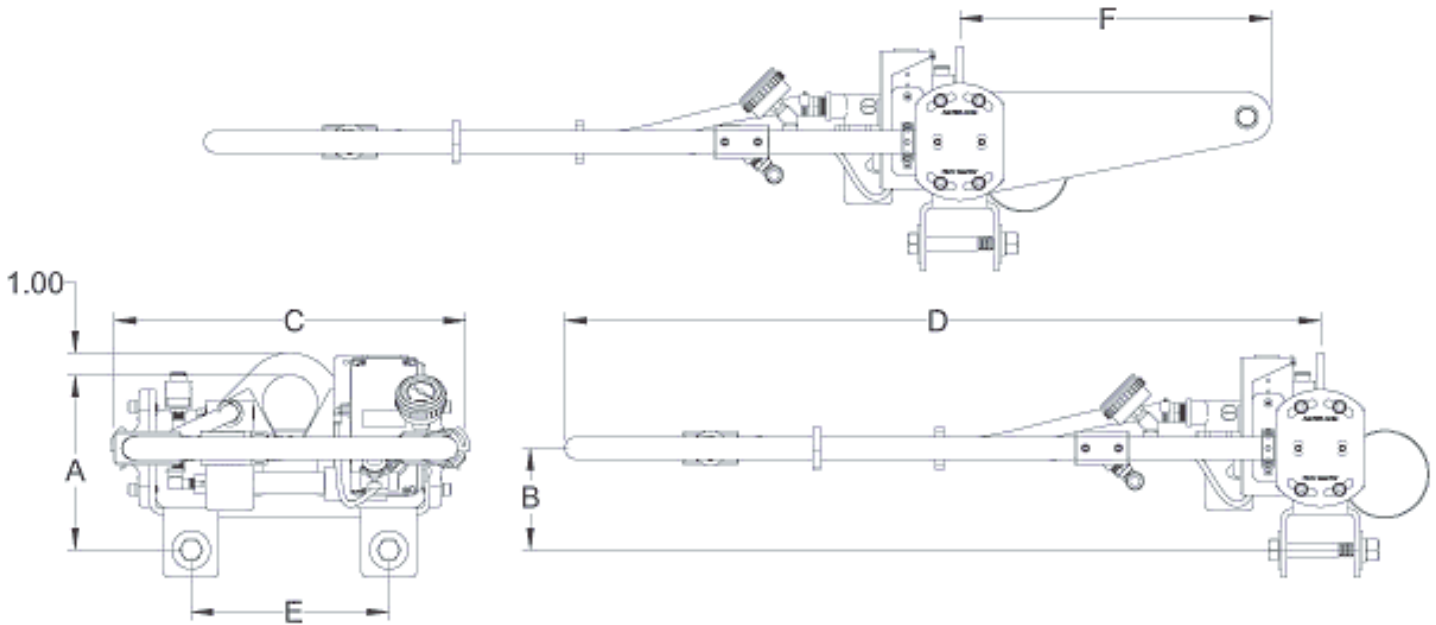


ANVER's Latest models of vacuum generators feature high capacity pumps, valves, filters and gauges for trouble-free operation in most demanding production environments. These light weight entry level units are designed for use with a wide assortment of vacuum lifters assemblies and pad attachments. The VPFL4-AIR Series features a sturdy welded frame construction and ruggedly built, yet affordably priced for unmatched value.

## Features

- Air Powered Vacuum Generators**  
 No electric power required, operates using dry clean compressed air for vacuum generation. The vacuum generator incorporates a single stage venture with no moving parts or rubber gaskets to maintain or replace.
- Front Mounted Vacuum Gauge**  
 Manifold vacuum gauge is front mounted on manifold block for continuous monitoring by the operator.
- Ergonomic Adjustable Front Handlebar**  
 Easy to grasp, large loop handlebar enables the operator to easily and safely maneuver the attached load without touching the load itself. Handlebar can be adjusted for smaller size loads.
- Slide Control Valve with Push-Button Safety Lock**  
 The slide control valve assembly controls the vacuum attach and release and is mounted to the front handlebar for convenient access by the operator. The push-button safety lock is to keep the slide valve in the attach position while lifting a load to prevent accidental load release.
- Vacuum Check Valve and Reservoir**  
 A check valve and a vacuum reservoir helps to maintain vacuum if the supply of compressed air is interrupted, for safe handling of nonporous loads.
- Takes Standard Dry, Clean Shop Air**  
 Input pressure to be regulated to 72.5 psi. Provided with 1/4" NPT
- Vacuum Loss Sensor and Warning System**
- Air Filter**  
 High capacity air filter provides protection against venture damage. A clear filter bowl to monitor filter for inspection and cleaning.
- Frame Construction**  
 Frames are fully welded with a structural lifting capacity rating of 2200 lb. (998 Kg.) for 3" sq. beams with beam mounting hardware.
- Versatility**  
 For larger load lifting capacity or alternate power requirements, ANVER offers electric powered, air powered and self powered mechanical vacuum generators, all with standard mounting designs for interchangeability.





Generator Model	VPFL4-20-AIR	VPFL4-20-AIR-C	VPFL4-25-AIR	VPFL4-25-AIR-C	VPFL4-30-AIR	VPFL4-30-AIR-C
Rated Load Capacity [lbs (kg.)]	2200 (998)	2200 (998)	2200 (998)	2200 (998)	2200 (998)	2200 (998)
Unit Weight [lbs (kg.)]	25 (11)	25 (11)	25 (11)	25 (11)	25 (11)	25 (11)
A Maximum Headroom [in. (mm)]	8 (203)	14 (356)	8 (203)	14 (356)	8 (203)	14 (356)
B Handlebar Height [in. (mm)]	4.63 (118)	4.63 (118)	4.63 (118)	4.63 (118)	4.63 (118)	4.63 (118)
C Handlebar Width [in. (mm)]	16 (406)	16 (406)	16 (406)	16 (406)	16 (406)	16 (406)
D Handlebar Length [in. (mm)]	34 (864)	17 (432)	34 (864)	17 (432)	34 (864)	17 (432)
E Hardware Centers [in. (mm)]	9 (229)	9 (229)	9 (229)	9 (229)	9 (229)	9 (229)
F Counterweight Length [in. (mm)]	14.2 (361)	N/A	14.2 (361)	N/A	14.2 (361)	N/A
Fits Square Tube Size [in. (mm)]	3x3 (76x76)	3x3 (76x76)	3x3 (76x76)	3x3 (76x76)	3x3 (76x76)	3x3 (76x76)
Vacuum Flow [SCFM]	4.5 (130)	4.5 (130)	7.06 (200)	7.06 (200)	9.5 (270)	9.5 (270)
Air Consumption [SCFM]	6.1 (170)	6.1 (170)	9.2 (260)	9.2 (260)	14 (400)	14 (400)
Application	smooth, non-porous	smooth, non-porous	smooth, semi-porous	smooth, semi-porous	Rough, semi-porous	Rough, semi-porous