

ANVER's latest models of vacuum generators feature high capacity pumps, valves, filters and gauges for trouble-free operation in the most demanding production environments.

Designed for use with a wide assortment of vacuum lifter assemblies and interchangeable pad attachments, these high quality Vac-Packs are ruggedly built, yet affordably priced for unmatched value. The VPF-57-AC features a sturdy welded frame construction for heavy weight load lifting capability.

Features

- **Energy Saver Technology**

A vacuum-controlled valve shuts off the vacuum pump when the pre-set vacuum level is reached, reducing wear and tear on the pump.

- **Front Mounted Controls and Gauges**

Vacuum gauge is mounted on front cover for continuous monitoring by operator. The power switch includes built-in circuit breaker. Also included is a filter view port to monitor filter for cleaning.

- **Ergonomic Adjustable Front Handlebar**

Easy to grasp, large loop handlebar enables the operator to easily and safely maneuver the attached load without touching the load itself. Handlebar can be adjusted for smaller size loads.

- **Slide Control Valve with Push-Button Safety Lock**

The slide valve assembly allows vacuum attach and release and is mounted to the front handlebar for convenient access by the operator. The push-button safety lock is to keep the slide valve in the attach position while lifting a load to prevent accidental load release.

- **Vacuum Check Valve and Reservoir**

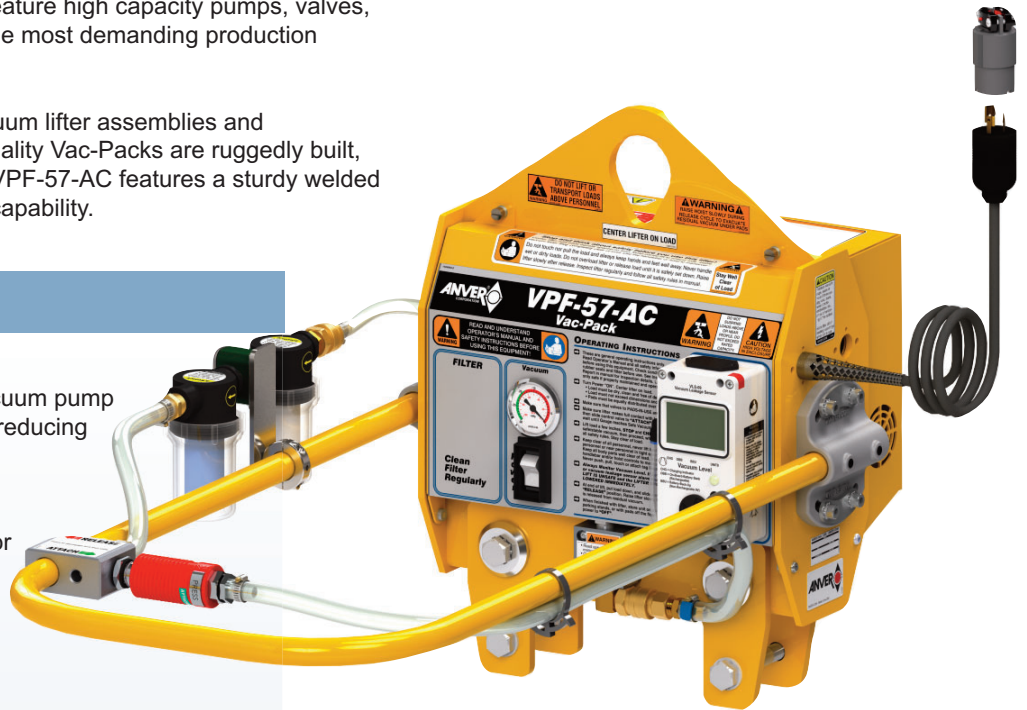
A check valve with vacuum reservoir helps to maintain vacuum if electrical power is interrupted, for safe handling of non-porous loads.

- **Twistlock Power Cord Plug and Receptical**

Both Twistlock plug and receptical are provided to prevent accidental power cord separation.

- **Vacuum Leakage Sensing System**

The VLS is a battery powered units consisting of solid state circuitry with microprocessor, pressure sensor, LCD digital display in inches of Hg, and audible and visual warning signs (horn and red light). System is plumbed to the Vac-Pack and monitors vacuum level triggering the alarm in the event of a loss in vacuum level (10% loss for VLS / 20% loss for VLS-20).



Maintenance

- **New redesign featuring new vacuum pump**

and updated for ease of inspection and replacement of key components, using quick disconnect and reusable fittings.

- **Easily Accessable Dual Vacuum Filters**

(2) Hi capacity air filters provides protection against pump damage. They are mounted on the front handlebar for easy routine inspection and cleaning.

General

- **Frame Construction**

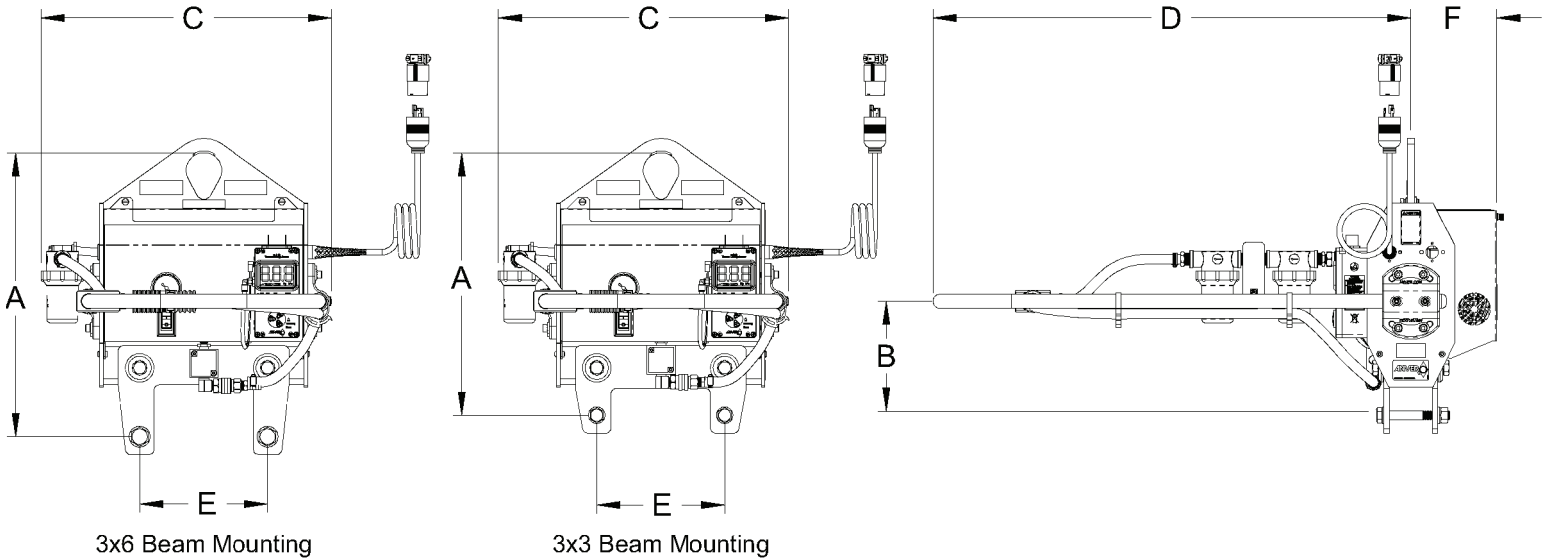
The VPF-57-AC Series has a fully welded frame with a vacuum reservoir and a lifting bail and beam mounting hardware.

Standard for 3"x3" beam [9" hardware centers] with a structural lifting capacity rating up to 2,200 lbs (998 kg).

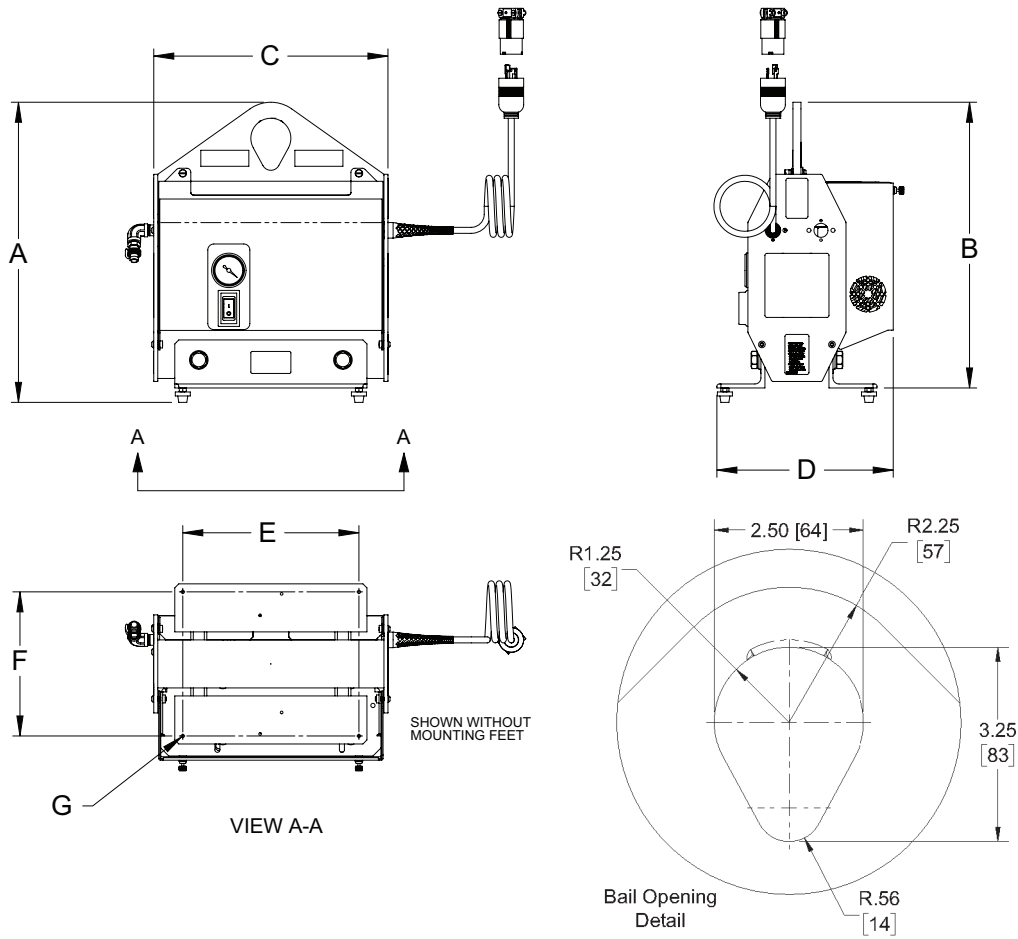
Heavy Duty for 3"x6" beam [9" hardware centers] and reinforced lifting bail with a structural lifting capacity rating up to 4,400 lbs (1,996 kg).

- **Versatility**

For larger load lifting capability or alternate power requirements, ANVER offers electric powered and self-powered mechanical vacuum generators, all with standard mounting designs for interchangeability.



Vac-Pack Model No.	VPF-57-AC	VPF-57-AC240
Rated Load Capacity (3x3 Beams) [lbs (kg.)]	2200 (998)	2200 (998)
Rated Load Capacity (3x6 Beams) [lbs (kg.)]	4400 (1996)	4400 (1996)
Unit Weight (3x3 Beams) [lbs (kg.)]	64 (29)	64 (29)
Unit Weight (3x6 Beams) [lbs (kg.)]	66 (30)	66 (30)
A Max. Headroom (3x3 Beams) [in. (mm)]	18 (457)	18 (457)
A Max. Headroom (3x6 Beams) [in. (mm)]	20 (508)	20 (508)
B Handlebar Height (3x3 Beams) [in. (mm)]	8 (203)	8 (203)
B Handlebar Height (3x6 Beams) [in. (mm)]	10 (254)	10 (254)
C Generator Width [in. (mm)]	20.38 (518)	20.38 (518)
D Handlebar Length [in. (mm)]	34 (864)	34 (864)
E Hardware Centers [in. (mm)]	9 (229)	9 (229)
F Vacuum Pump Depth [in. (mm)]	6 (152)	6 (152)
Incoming Power Requirement AC	115V/1PH/60Hz 7 Amps	220-240V/1PH/50Hz 5 Amps
Energy Saver / Quiet Automatic Shut-Off	YES	YES



Vac-Pack Model No.	VPF-57R-AC
Unit Weight [lbs (kg.)]	80 (36)
A Maximum Headroom [in. (mm)]	18.75 (476)
B Headroom without Mounting Feet [in. (mm)]	17.88 (454)
C Generator Width [in. (mm)]	16.25 (418)
D Generator Depth [in. (mm)]	11.00 (279)
E x F Generator Mounting [in. (mm)]	11.00 (279) x 9.00 (229)
G Generator Mounting Holes [in.]	1/4-20 UNC
Incoming Power Requirement AC	115V/1PH/60Hz – 7 Amps
Energy Saver / Quiet Automatic Shut-Off	YES