



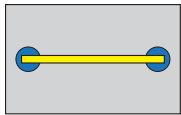
ANVER'S Standard Vacuum Lifters offer efficient material handling solutions by promoting functionality, safety, and ergonomic operations for a wide variety of applications and materials. Standard lifting frames are built to order from stock using modular components, so there are hundreds of possible combinations depending on the vacuum generator, beam, crossarms, and vacuum cups selected.

Basic features on ANVER's Standard Horizontal Vacuum Lifters include: vacuum leakage sensor and warning system; attach/release slide valve with safety lock; and locking hand knobs on the adjustable vacuum pad, slide assemblies, and crossarms (when applicable).

ANVER Vacuum Lifters comply fully with and meet the standards of US ANSI ASME Standard B30.20 for below-the-hook lifting devices, as well as complying with OSHA and most European requirements.

The L420M2-86 two-pad lifting frame is ideal for handling carbon steel and stainless steel sheets and plates with a capacity up to 4200 lb (1905 kg). This lifting frame is compatible with a Mechanical, Self-powered Vacuum Generator. Foam pads are not available for mechanical vacuum generators.

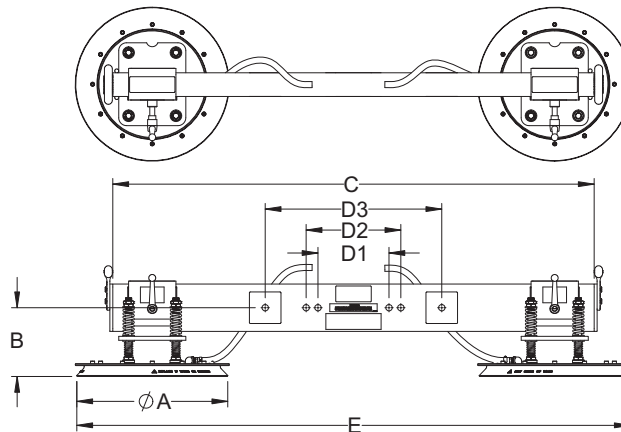
*Lifting frame shown with vacuum generator and/or optional accessories, not included.



Vacuum pads in fully extended position to handle maximum plate size.



Vacuum pads moved inwards to handle shorter plate.



Lifting Frame Number	L420M2-86
Rated Load Capacity [lbs (kg)]	4200 (1905)
Unit Weight [lbs (kg)]	309 (140)
A Pad Diameter [in. (mm)]	24 (610)
B Lifting Frame Headroom [in. (mm)]	11 (279)
C Beam Length [in. (mm)]	86 (2184)
D1 Standard Hardware Mtg. Centers [in. (mm)]	9 (229)
D2 Inner Alternate Hardware Mtg. Centers [in. (mm)]	12 (305)
D3 Outer Alternate Hardware Mtg. Centers [in. (mm)]	22.38 (568)
E Pad Distances Max. [in. (mm)]	103.5 (2629)
E Pad Distances Min. with M250M [in. (mm)]	44.5 (1130)
Maximum Sheet Size [ft (M)]	12 x 6 (3.7 x 1.8)
Seal Number	SR-235M