

ANVER'S Standard Vacuum Lifters offer efficient material handling solutions by promoting functionality, safety, and ergonomic operations for a wide variety of applications and materials. Standard lifting frames are built to order from stock using modular components, so there are hundreds of possible combinations depending on the vacuum generator, beam, crossarms, and vacuum cups selected.

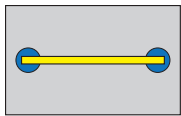
Basic features on ANVER's Standard Horizontal Vacuum Lifters include: vacuum leakage sensor and warning system; attach/release slide valve with safety lock; and locking hand knobs on the adjustable vacuum pad, slide assemblies, and crossarms (when applicable).

ANVER Vacuum Lifters comply fully with and meet the standards of US ANSI ASME Standard B30.20 for below-the-hook lifting devices, as well as complying with OSHA and most European requirements.

The L460M2-86 two pad lifting frame is suitable to handle steel sheets with a capacity up to 4600 lb (2086 kg). This lifting frame is compatible with VPF-57HD, VPE1-HD and VPE3-S. Foam pads are not available for mechanical vacuum generators.

NOTE: The L460M2-86 is derated to 4400 lb (1996 kg) when used with the VPF-57HD (series) generators.

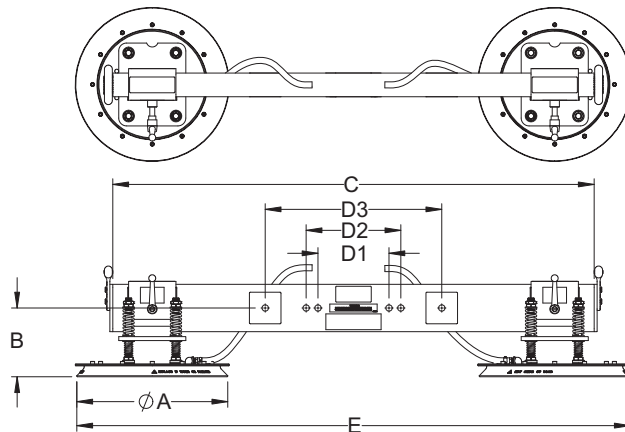
*Lifting frame shown with vacuum generator and/or optional accessories, not included.



Vacuum pads in fully extended position to handle maximum plate size.



Vacuum pads moved inwards to handle shorter plate.



Lifting Frame Number	L460M2-86
Rated Load Capacity [lbs (kg)]	4600 (2087)
Unit Weight [lbs (kg)]	205 (93 kg)
A Pad Diameter [in. (mm)]	24 (610)
B Lifting Frame Headroom [in. (mm)]	11 (279)
C Beam Length [in. (mm)]	86 (2184)
D1 Hardware Mtg. Centers [in. (mm)]	9 (229)
D2 Inner Alternate Hardware Mtg. Centers [in. (mm)]	12 (305)
D3 Outer Alternate Hardware Mtg. Centers [in. (mm)]	22.38 (568)
E Pad Distances Max. [in. (mm)]	103.5 (2629)
E Pad Distances Min. with M250M [in. (mm)]	49 (1245)
E Pad Distances Min. with VPF-57HD [in. (mm)]	49 (1245)
E Pad Distances Min. with VPE1-H [in. (mm)]	49 (1245)
E Pad Distances Min. with VPE3-S [in. (mm)]	57 (1448)
Maximum Sheet Size [ft (M)]	12 x 6 (3.7 x 1.8)
Pad Number	VP235MQ