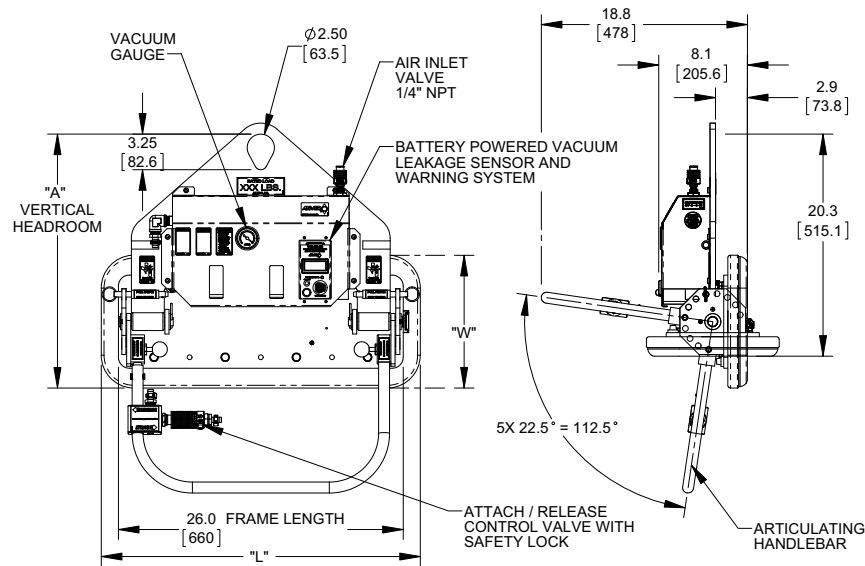




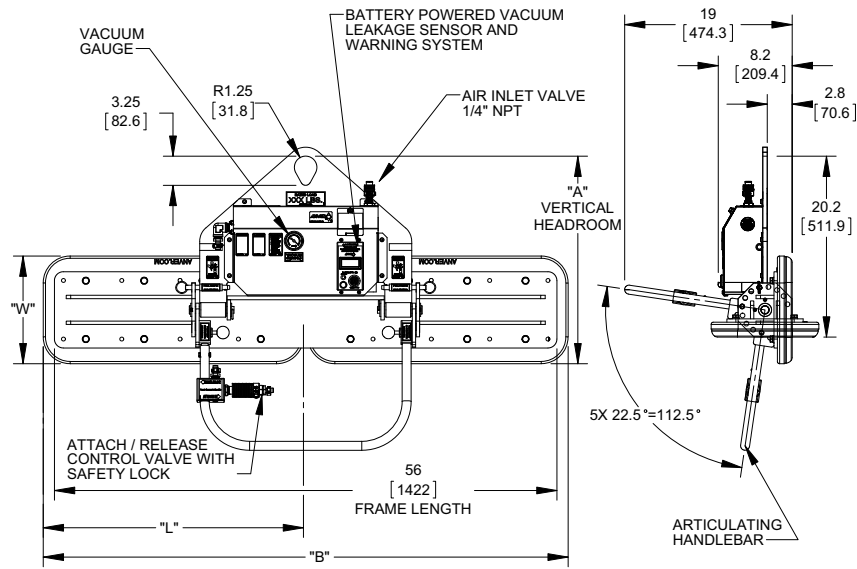
Designed to lift smooth or rough stone off near vertical racks, onto tables and back. These are quality U.S. made lifters which feature rugged construction and a unique filter-reservoir system specifically designed to work in environments of moisture and stone dust. These lifters are designed for the maximum amount of time on the job with the minimum of service. The ANVER-made, air-powered pump at the heart of these systems has no moving parts, so there are no electric motors, switches etc. to burn out. One model to handle most of your stone types and surface textures.

## Features

- Compressed air generator – JE25H
- Large dual filter / reservoir
- Gravity tilt, 90 degrees with 6 tilt lock pin positions
- Articulating handlebar with 6 pin positions for handle adjustment
- Vacuum attach / release control valve assembly w/ safety lock, mounted to handlebar
- Vacuum pad with replaceable seals (Foam seals sold separately)
- GUP Service Manual #: 12000018



Model Number	GUP-A50S-1025	GUP-A55S-1220	GUP-A75S-1229	GUP-A100S-1432
Rated Load Capacity [lbs (kg)]	500 (227)	550 (250)	750 (340)	1000 (454)
Unit Weight [lbs (kg)]	104 (47)	90 (41)	117 (53)	130 (59)
A Vertical Headroom [in. (mm)]	22 (559)	23 (584)	23 (584)	24 (640)
W x L Vacuum Pad Size [in. (mm)]	10.13 x 25.13 (257 x 638)	12.13 x 20.5 (308 x 520.7)	12.13 x 29.13 (308 x 740)	14.13 x 32.13 (359 x 816)
Load Types	Smooth Polished Rough Sawcut Flamed Stone Slabs	Smooth Polished Stone Slabs	Smooth Polished Rough Sawcut Flamed Stone Slabs	Smooth Polished Rough Sawcut Flamed Stone Slabs



Model Number	GUP-A100M2-1025	GUP-A110M2-1220	GUP-A150M2-1229	GUP-A200M2-1432
Rated Load Capacity [lbs (kg)]	1000 (454)	1100 (499)	1500 (680)	2000 (909)
Unit Weight [lbs (kg)]	190 (86)	110 (50)	210 (95)	190 (86)
A Vertical Headroom [in. (mm)]	22 (559)	27 (686)	23 (584)	24 (610)
B Overall Pad Width [in. (mm)]	53.13 (1349)	25.13 (613)	58.63 (1489)	66.13 (1680)
W x L Vacuum Pad Size [in. (mm)]	10.13 x 25.13 (257 x 638)	12.13 x 20.5 (308 x 520.7)	12.13 x 29.13 (308 x 740)	14.13 x 32.13 (359 x 816)
Load Types	Smooth Polished Rough Sawcut Flamed Stone Slabs	Smooth Polished Stone Slabs	Smooth Polished Rough Sawcut Flamed Stone Slabs	Smooth Polished Rough Sawcut Flamed Stone Slabs