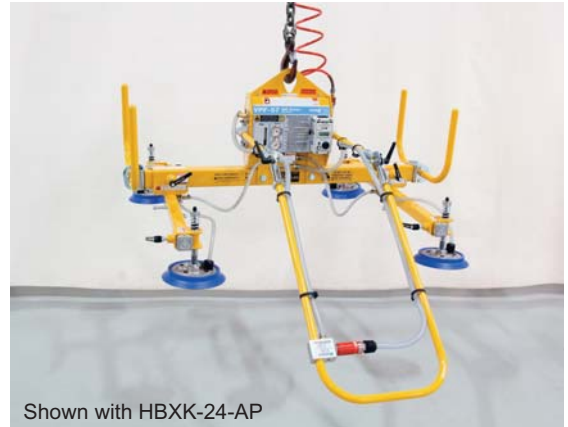


- Handlebar Extension Kits are an optional accessory that can be added to existing lifters (with extra hose) or new lifters upon ordering.
- Handlebar Extension Kits are used for wide loads where the operator must stand further away.
- The Kit allows the handle to move a range of 90 degrees (45 degrees up and down) and can be friction locked in position by tightening a hand knob.
- If load specifications change, handles can be completely removed if proven unnecessary, as they are an optional accessory.

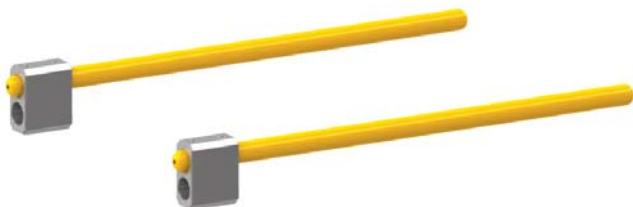
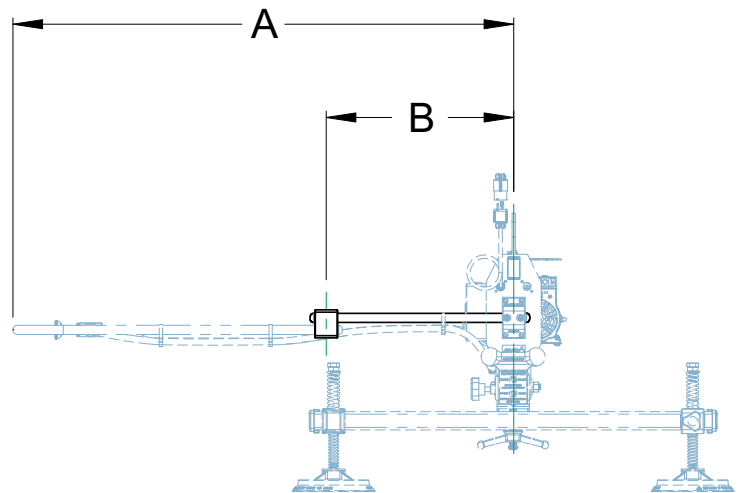
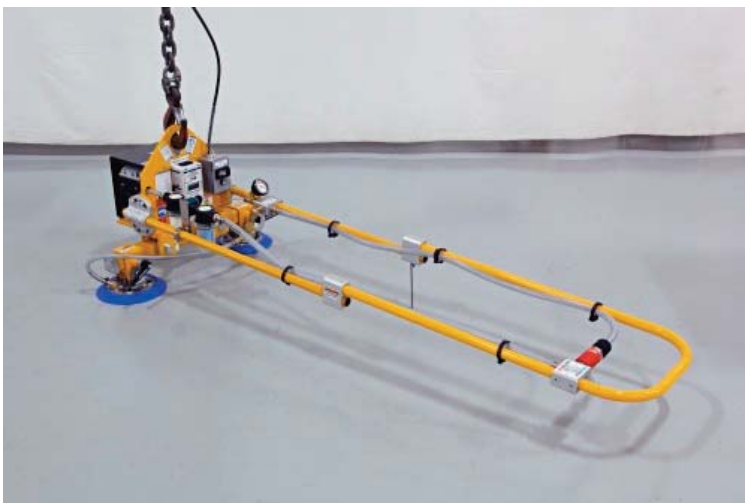
NOTES:

1. All kits listed require using existing front handlebar with handlebar mounting brackets and hardware unless otherwise specified.
2. For lifters with VPFL4's, VPF-57's, ATL's, AT's, ETL's & ET's type generator, hose and required fittings needs to be ordered to accommodate all kits for attach/release control valve with safety lockouts. Contact ANVER for information and application requirements.
3. Depending on the lifter application using VPFL4's, VPF-57's, VPE1's & BAE1's generator, bolt-on counterweight P/N: HBXK-CW may need to be ordered. Maximum handlebar extension adjustment will be reduced. Contact ANVER for information and application requirements.
4. For ATL's, AT's, ETL's & ET's type generators [for tilters], handlebar extension kit adjustment dimensions do not apply. Contact ANVER for information and application requirements.
5. Use of a handlebar extension kit will alter the hang angle the lifter will achieve. Consult factory for more information.



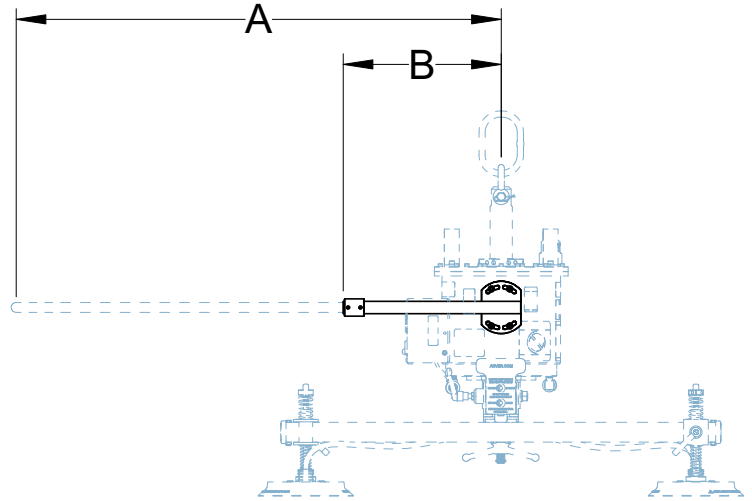
Vacuum Generator Compatibility

Handlebar Diameter	***M100M	M150M	M250M	**VPFL4	**VPF-57	BAE1	BAE3-GEN2	VPE1	VPE3-GEN2	***ATL	***ETL	**AT	**ET
1 (25.4)	•	•	N/A	•	•	•	N/A	•	N/A	•	•	•	•
1.25 (31.75)	N/A	N/A	•	N/A	N/A	N/A	•	N/A	•	N/A	N/A	N/A	N/A



Model Number (Pair)	Handlebar Dia. in. (mm)	A Extended Length in. (mm)		B Extension Length in. (mm)		Unit Weight (Pair) lb (kg)
		Max.	Min.	Max.	Min.	
HBXK-24-A	1 (25.4)	54 (1372)	36 (914)	20 (508)	6 (152)	5 (2.3)
HBXK-36-A	1 (25.4)	66 (1676)	48 (1219)	32 (813)	6 (152)	9 (4.1)
HBXK-24-A-114	1.25 (31.75)	52 (1321)	36 (914)	18 (457)	9 (229)	8 (3.6)
HBXK-36-A-114	1.25 (31.75)	64 (1626)	48 (1219)	30 (762)	9 (229)	11 (5.0)

Photo to Come

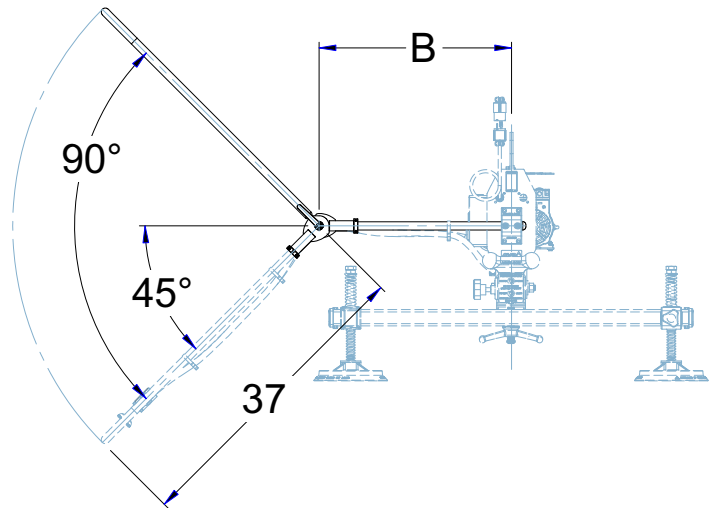


Model Number (Pair)	A Extended Length in. (mm)		B Extension Length in. (mm)	Unit Weight (Pair) lb (kg)
	Max.	Min.		
HBXK-18-T	49 (1247)	21 (534)	16 (406)	8 (3.7)

*The handlebar must not extend handlebar beyond the back of the generator frame when using with AT/ET Tilter Generators.

**Handlebar extension kit will not telescope without adjusting all mounted components when mounted on generators with hoses and fittings mounted to the handle.

***Due to the handlebar design, telescoping maximum and minimum dimensions will be different than stated. Contact factory for more information.



Model Number (Pair)	A Extended Length in. (mm)		B Extension Length in. (mm)		Unit Weight (Pair) lb (kg)
	Max.	Min.	Max.	Min.	
HBXK-24-AP	60 (1524)	43 (1092)	23 (584)	6 (152)	7 (3.2)
HBXK-36-AP	72 (1829)	43 (1092)	35 (889)	6 (152)	9 (4)