

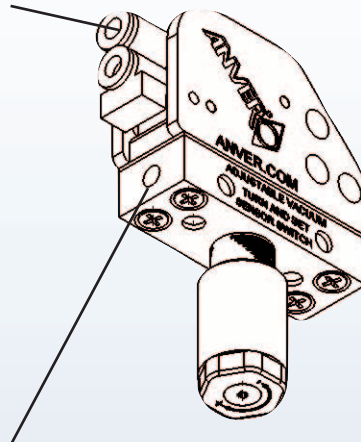


Pneumatic (VSPN-ADJ-NC, VSPN-ADJ-NO) and Electric (VSEL-ADJ-NCNO) Adjustable Vacuum Switches

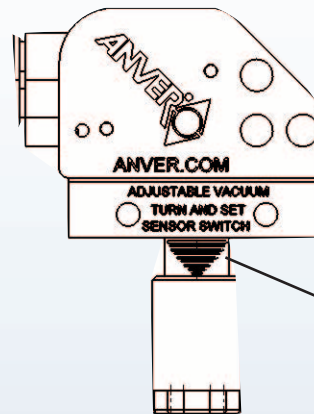
- ANVER Adjustable Vacuum Switches are ideal for conservation of power, as well as, for control of pneumatic and electrical equipment function.
- Conserve your compressed air by stopping the flow when desired vacuum level is reached.
- Conserve electric power and reduce pump and motor wear by shutting off systems at set vacuum levels.
- Control auxiliary equipment, such as alarm systems and warning lights.

Features

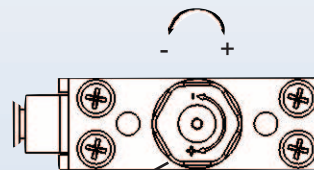
Push-to-Connect fitting on pneumatic switch and spade terminals on electric switch for easy installation.



Threaded Vacuum Ports on both ends, (fits M5 or 10-32 thread), allows for series connection, or insert plug in one end for single vacuum line connection. Supplied with one threaded plug, part no. SPG-10.

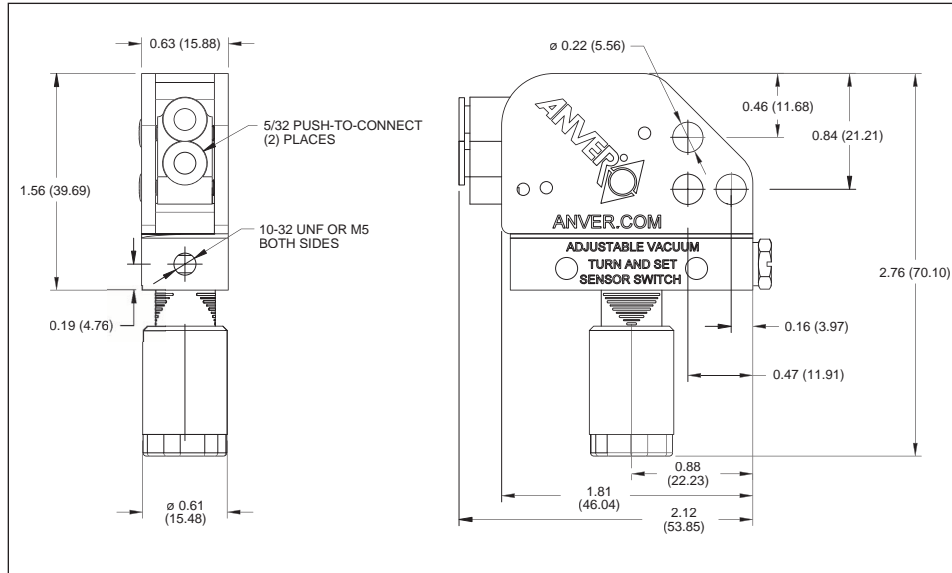


Graduation marks on barrel for vacuum setting reference.



Easily adjust vacuum level desired to actuate pneumatic valve or electric switch. Turn knob CW to increase vacuum and CCW to decrease setting. To avoid damage, don't turn more than a quarter turn at a time.

Vacuum Actuated Pneumatic Switches



Part Numbers: VSPN-ADJ-NO, VSPN-ADJ-NO-L (Normally Open)
VSPN-ADJ-NC, VSPN-ADJ-NC-L (Normally Closed)

Pneumatic Switch with 5/32" (4 mm) Push-To-Connect Tube Fittings
Pressure Range = 1.5 - 8 bar (20 - 115 psi)
Hysteresis = Min.: 0.5 in. Hg, Max.: 1.5 in. Hg, Avg.: 0.5 in. Hg
Orifice Size = 2mm (0.079")
Air Consumption at 6 bar = 0.7 l/min (0.025 cfm)

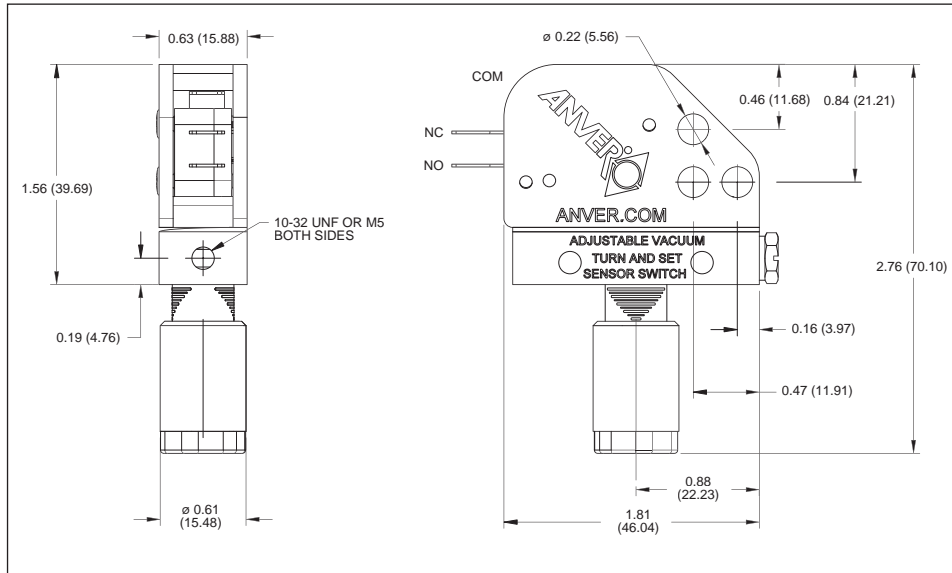


Function	Schematic	Part No.	Vacuum Level
NO		VSPN-ADJ-NO	15-30 in. Hg
		VSPN-ADJ-NO-L	0-15 in. Hg
NC		VSPN-ADJ-NC	15-30 in. Hg
		VSPN-ADJ-NC-L	0-15 in. Hg

Pneumatic Switch Part Numbers & Function

Note: NO/NC Pneumatic Switches utilize different micro air valves.
Be sure to specify correct part number for desired function.

Vacuum Actuated Electric Switch



Part Number: VSEL-ADJ-NCNO, VSEL-ADJ-NCNO-L
(Normally Open or Normally Closed)



Electric Switch with NO/NC spade terminals.
Current Rating = 10A
Hysteresis = Min.: 0.5 in. Hg, Max.: 4 in. Hg, Avg.: 3 in. Hg
Voltage Rating = 125/250 VAC

Function	Schematic	Part No.	Vacuum Level
NO/NC		VSEL-ADJ-NCNO	15-30 in. Hg
		VSEL-ADJ-NCNO-L	0-15 in. Hg

NOTE: Refer to above switch assembly diagram for proper NO/NC connections.



Part No.: 34000053
Optional ANVER Vacuum Switch Connector
and 18' Cable Harness.