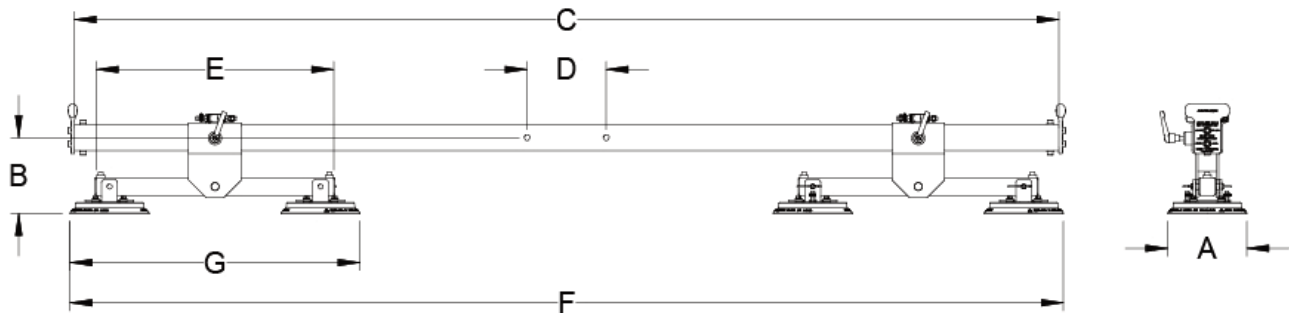


ANVER'S Standard Vacuum Lifters offer efficient material handling solutions by promoting functionality, safety, and ergonomic operations for a wide variety of applications and materials. Standard lifting frames are built to order from stock using modular components, so there are hundreds of possible combinations depending on the vacuum generator, beam, crossarms, and vacuum cups selected. Basic features on ANVER's Standard Horizontal Vacuum Lifters include: vacuum leakage sensor and warning system; attach/release slide valve with safety lock; and locking hand knobs on the adjustable vacuum pad, slide assemblies, and crossarms (when applicable).

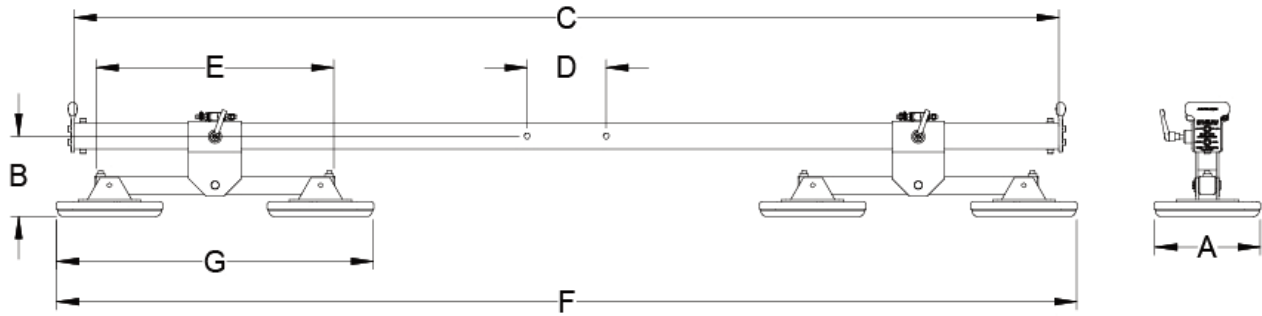
ANVER Vacuum Lifters comply fully with and meet the standards of US ANSI ASME Standard B30.20 for below-the-hook lifting devices, as well as complying with OSHA and most European requirements.

This series works well for skin covered, insulated panels. It allows a lifting frame to handle up to 20 FT. (6.1 M) loads (if thick enough) with a 128 in. (3251mm) main beam. The L100M4-110WT unit can be shipped in one of our premade export shipping boxes for no extra charge. The type of vacuum lifter – Mechanical, Air, or Electric – paired with the number of pads used will depend on your application needs. Foam pads are not available for mechanical vacuum generators.

*Lifting frame shown with vacuum generator and/or optional accessories, not included.



Lifting Frame Number	L100M4-110WT	L100M4-126WT
Rated Load Capacity [lbs (kg)]	1000 (454)	1000 (454)
Unit Weight [lbs (kg)]	150 (69)	181 (82)
A Pad Diameter [in. (mm)]	9.13 (232)	9.13 (232)
B Lifting Frame Headroom [in. (mm)]	9 (229)	9 (229)
C Beam Length [in. (mm)]	112 (2845)	128 (3251)
D Hardware Mounting Centers [in. (mm)]	9 (229)	9 (229)
E Crossarm Length [in. (mm)]	27 (686)	27 (686)
F Outer Pad Distances Maximum [in. (mm)]	136 (3455)	146 (3708)
F Outer Pad Distances Minimum [in. (mm)]	69 (1753)	69 (1753)
G Pad Distance Along Crossarm [in. (mm)]	34 (864)	34 (864)
Maximum Load Size [ft. (M)]	16 x 4 (4.9 x 1.2)	20 x 4 (6.1 x 1.2)
Seal Number	SSR-92	SSR-92



Lifting Frame Number	L100M4-110FP-WT	L100M4-126FP-WT
Rated Load Capacity [lbs (kg)]	1000 (454)	1000 (454)
Unit Weight [lbs (kg)]	150 (69)	181 (82)
A Pad Diameter [in. (mm)]	12.00 (305)	12.00 (305)
B Lifting Frame Headroom [in. (mm)]	10 (254)	10 (254)
C Beam Length [in. (mm)]	112 (2845)	128 (3251)
D Hardware Mounting Centers [in. (mm)]	9 (229)	9 (229)
E Crossarm Length [in. (mm)]	27 (686)	27 (686)
F Outer Pad Distances Maximum [in. (mm)]	139 (3531)	155 (3937)
F Outer Pad Distances Minimum [in. (mm)]	72 (1829)	72 (1829)
G Pad Distance Along Crossarm [in. (mm)]	36 (915)	36 (915)
Maximum Load Size [ft. (M)]	16 x 4 (4.9 x 1.2)	20 x 4 (6.1 x 1.2)
Seal Number	FR128	FR128

This unit can be shipped in one of our premade export shipping boxes for no extra charge.

