

ANVER's Latest models of vacuum generators feature high capacity pumps, valves, filters and gauges for trouble-free operation in most demanding production environments. These light weight entry level units are designed for use with a wide assortment of vacuum lifters assemblies and pad attachments. The VPFL4-AIR Series features a sturdy welded frame construction and ruggedly built, yet affordably priced for unmatched value.

Features

- **Air Powered Vacuum Generators**

No electric power required, operates using dry clean compressed air for vacuum generation. The vacuum generator incorporates a single stage venturi with no moving parts or rubber gaskets to maintain or replace.

- **Energy Saver Vacuum Generator**

The vacuum controlled valve shuts off the flow of compressed air to the pump when the pre-set level is reached, and consequently the consumption of compressed air is minimized. (Not available on VPFL4-30-AIR-T)

- **Front Mounted Vacuum Gauge**

Manifold vacuum gauge is front mounted on manifold block for continuous monitoring by the operator.

- **Ergonomic Adjustable Front Handlebar**

Easy to grasp, large loop handlebar enables the operator to easily and safely maneuver the attached load without touching the load itself. Handlebar can be adjusted for smaller size loads.

- **Slide Control Valve with Push-Button Safety Lock**

The slide control valve assembly controls the vacuum attach and release and is mounted to the front handlebar for convenient access by the operator. The push-button safety lock is to keep the slide valve in the attach position while lifting a load to prevent accidental load release.

- **Vacuum Check Valve and Reservoir**

A check valve and a vacuum reservoir helps to maintain vacuum if the supply of compressed air is interrupted, for safe handling of nonporous loads.

- **Takes Standard Dry, Clean Shop Air**

Input pressure to be regulated to 90 psi (72.5 psi on VPFL4-30-AIR-T). Provided with 1/4" NPT

- **Vacuum Loss Sensor and Warning System**

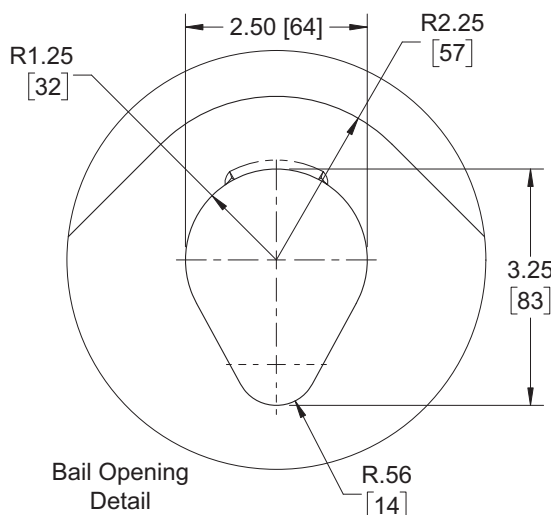
The VLS is a battery powered unit consisting of solid state circuitry with microprocessor, pressure sensor, LCD digital display in inches of Hg, and audible and visual warning signs (horn and red light). System is plumbed to the Vac-Pack and monitors vacuum level triggering the alarm in the event of a leakage in vacuum level (10% leakage for VLS / 20% leakage for VLS-20).

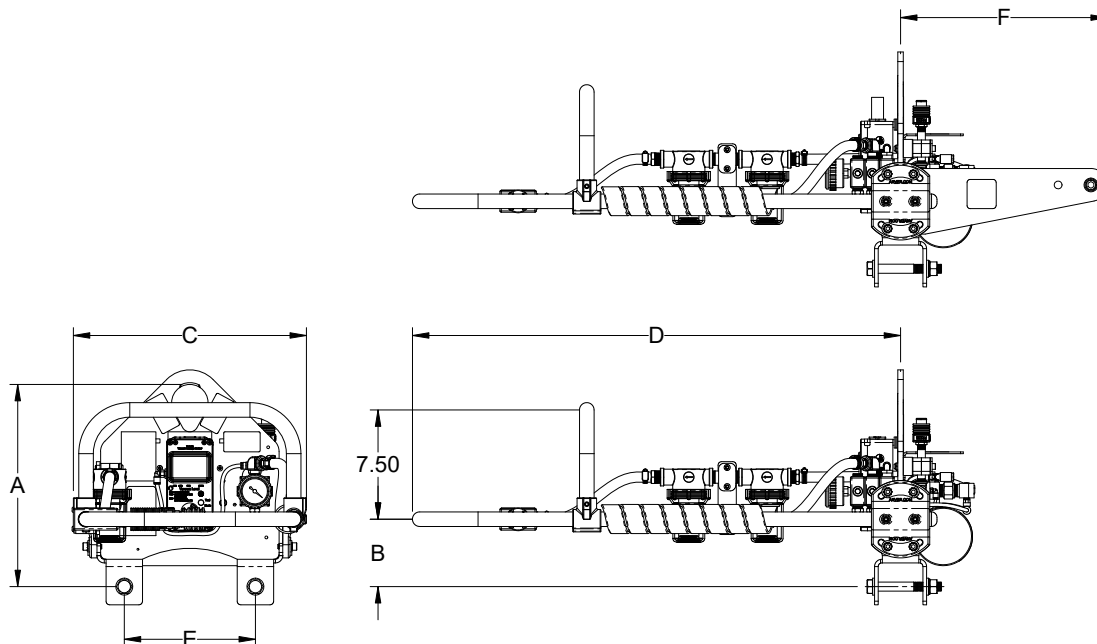
- **Dual Air Filters**

High capacity air filters provide protection against venturi damage. A clear filter bowl to monitor filter for inspection and cleaning.

- **Frame Construction**

Fully welded with a structural lifting capacity rating of 2200 lb. (998 Kg.) for 3" sq. beams with beam mounting hardware.





Generator Model	VPFL4-20-AIR-T	VPFL4-20-AIR-C	VPFL4-25-AIR-T	VPFL4-25-AIR-C	VPFL4-30-AIR-T	VPFL4-30-AIR-C
Rated Load Capacity [lbs (kg.)]	2200 (998)	2200 (998)	2200 (998)	2200 (998)	2200 (998)	2200 (998)
Unit Weight [lbs (kg.)]	41 (19)	25 (11)	41 (19)	25 (11)	41 (19)	25 (11)
A Maximum Headroom [in. (mm)]	14 (356)	14 (356)	14 (356)	14 (356)	14 (356)	14 (356)
B Handlebar Height [in. (mm)]	4.63 (118)	4.63 (118)	4.63 (118)	4.63 (118)	4.63 (118)	4.63 (118)
C Handlebar Width [in. (mm)]	16.25 (413)	16 (406)	16.25 (413)	16 (406)	16.25 (413)	16 (406)
D Handlebar Length [in. (mm)]	34 (864)	17 (432)	34 (864)	17 (432)	34 (864)	17 (432)
E Hardware Centers [in. (mm)]	9 (229)	9 (229)	9 (229)	9 (229)	9 (229)	9 (229)
F Counterweight Length [in. (mm)]	14.25 (361)	N/A	14.25 (361)	N/A	14.25 (361)	N/A
Fits Square Tube Size [in. (mm)]	3x3 (76x76)	3x3 (76x76)	3x3 (76x76)	3x3 (76x76)	3x3 (76x76)	3x3 (76x76)
Vacuum Flow [SCFM]	4.5 (130)	4.5 (130)	7.06 (200)	7.06 (200)	9.5 (270)	9.5 (270)
Air Consumption [SCFM]	6.1 (170)	6.1 (170)	9.2 (260)	9.2 (260)	14 (400)	14 (400)
Application	smooth, non-porous	smooth, non-porous	smooth, semi-porous	smooth, semi-porous	Rough, semi-porous	Rough, semi-porous
Energy Saver / Quiet Automatic Shut-Off	YES	NO	YES	NO	NO	NO

Note: Optimum pressure is 90 psi. (72.5 psi on VPFL4-30-AIR-T) Air supply flow (CFM) may adversely affect required pressure (psi) to achieve optimum vacuum level. Vacuum level is 24" Hg at sea level. Due to Energy Saver Technology, air consumption is "0" on a non-porous material once the vacuum level is reached at peak value. Energy Saver not included with VPFL4-30-AIR-T.